

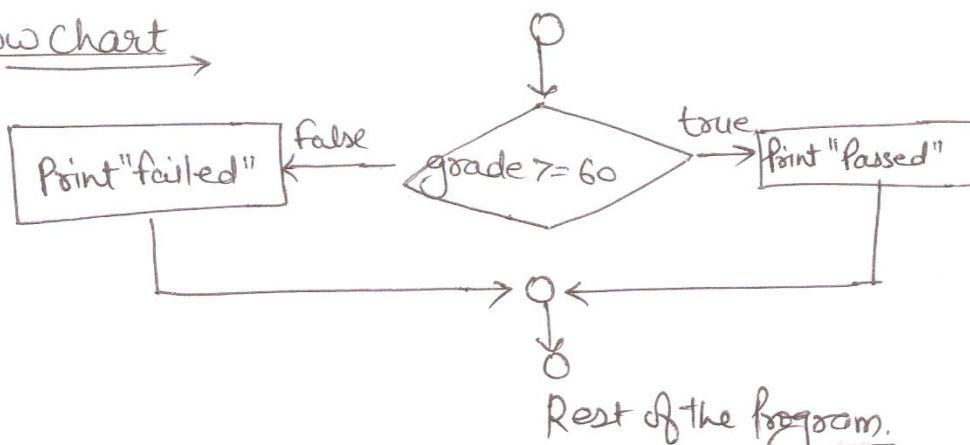
## if-else Statement

In this atleast one statement will be executed. If condition is true then if statement otherwise else statement.

```
if (grade >= 60)
{
    printf("Passed");
}
else
{
    printf("Failed");
}
```

In this if the value of grade is  $\geq$  or equal to 60 then if block will be executed otherwise else block will be executed

Flowchart



Subscribe to our  
**YouTube Channel**



## Nested if-else Statements

Nested means something inside another thing so Nested if-else Statement specifies that if-else may be inside the another

if-else conditions.

```
Eg if (grade >= 90)
{
    printf("A");
}
else
{
    if (grade >= 80)
    {
        printf("B");
    }
    else
    {
        printf("C");
    }
}
```

**Nested if-else**

Explanation  $\Rightarrow$

In this (grade  $\geq$  90) condition is checked if it is true then A will be printed else it goes to else block. In else block it again checks (grade  $\geq$  80) if it is true then B will be printed otherwise it goes to nested else block and print C.

\*\* this Nested if-else can be of many times.